

FLORA OF NEPAL SECOND EDITORIAL MEETING

Monday 16th October 2006

held at

Nepal Academy of Science and Technology, Kathmandu

PARTICIPANTS

Nepal	Prof. Dayananda Bajracharya, NAST Dr Kayo Devi Yami, NAST Prof Krishna Kumar Shrestha, Tribhuvan University (TU) Dr Tirtha Bahadur Shrestha, freelance senior botanist
UK	Prof. Stephen Blackmore, RBGE (Chair) Dr Mark Watson, RBGE Dr Colin Pendry, RBGE
Japan	Prof. Hideaki Ohba, University of Tokyo (TI) Dr Shinobu Akiyama, National Science Museum, Tokyo (TNS)
Apologies	Dr Keshab Raj Rajbhandari (formerly DPR, currently in Japan)

REPORT OF THE INFORMAL VIENNA MEETING, 19 JULY 2005

On 19th July 2005, an informal meeting was held of the Flora of Nepal editorial committee members attending the International Botanical Congress held at the Austria Conference Centre, Vienna. This was attended by:

Prof Stephen Blackmore (Chair)
Prof Hideaki Ohba
Dr Mark Watson
Dr Shinobu Akiyama
Prof Krishna Shrestha
Dr Colin Pendry
Dr Charlie Jarvis (Natural History Museum, London)

Several matters were discussed and are summarised below.

- **Date of publishing volume 3.** KS noted that Prof Bajracharya would like the first volume to be published before the end of his term of office in March 2006. This will not be possible due to RBGE's heavy commitments on the Darwin Initiative training programme and other pressures in Japan. A revised completion date of manuscripts of late 2006 was proposed for volume 3.
- **Papers relating to the Flora.** HO reported that the Japanese Journal of Botany would be pleased to publish articles in the Notes Relating to the Flora of Nepal series. KS mentioned that these articles could also be published in the Edinburgh Journal of Botany.

- **Awards and Fellowships.** HO reported that after Keshab Rajbhandari (KR) retirement in June 2006 he will work in Japan for 10 months on a fellowship grant. KS was congratulated on his recent National Science & Technology award by RONAST (now NAST).
- **Databases and electronic resources.** The need to join data available in the UK, Japan and Nepal datasets in an online resource was discussed. Source of the original data provider would be acknowledged. Live online updates of a central datastore would be optimal but slow connections in Nepal make batch updates more realistic.. KS has images of more than 1000 historically important herbarium specimens from BM, E, G, K, KYO and TI. These should be made available via the Flora of Nepal website and KS will pass on the relevant CD.
- **Guidelines to Contributors.** Some additional changes were proposed by HO and KR and an annotated manuscript handed to CP. However, this was later lost when CP's delegate pack went missing.
- **Gazetteer.** KS and CP have been working on the Darwin I dataset which will form part of the FoN gazetteer. The Japanese Gazetteer should also be included with this in a single resource for the Himalaya along with RBGE's East Himalaya Gazetteer.

MINUTES OF THE SECOND EDITORIAL BOARD MEETING

- AGENDA**
1. Pre Editorial Board Meeting Discussion
 2. Composition of the Editorial Board
 3. Guidelines for Contributors
 4. Procedure for Processing of Manuscripts
 5. Review of progress on manuscripts for Volume 3
 6. Potential Publishers for the Flora
 7. Any Other Business
-

1. PRE EDITORIAL BOARD MEETING DISCUSSION

Prior to the Editorial Board Meeting a general meeting was held attended by Board members and senior figures from the participating organisation. In addition to the participants listed above, the following people also attended:

Prof. Hom Nath Bhattarai, Vice Chancellor, NAST (Chair)
 Mr Puspa Raj Shrestha, Deputy Director General, DPR
 Mr Rajesh Uprety, DPR
 Prof. Bishal Nath Upreti, Dean, Institute of Science and Technology (TU)
 Dr Puspa Ratna Shakya, freelance senior botanist

KS introduced the meeting, inviting Prof Bhattarai as the Chair. MW discussed the objectives and agenda items (see above) for the following Editorial Board Meeting. DB gave a brief history of the Flora of Nepal programme, commenting that FoN was formally mentioned in parliament and has political support at the highest level. HO added to the historical account with comments on the Yokohama meeting in 1993 and pledged support to the FoN. SB continued by reaffirming RBGE's support for FoN and its dedication by providing administrative support to the project. SB discussed the essential capacity building first phase of FoN undertaken by RBGE through Darwin Initiative funding. TS added the importance of the use of plants for the benefit of the people of Nepal, and that FoN should not be purely an academic product but also be applicable to the general people. P Shakya, P Shrestha and BU also voiced support for FoN, with BU adding the

importance of mapping using recent geological and vegetation type base maps. KY outlined the results of the Darwin Initiative project and highlighted the training of 16 botanists in preparing accounts for FoN. Finally the Chairman added his support for the FoN project, commenting that this was a valuable project to Nepal involving many dedicated scientists in Nepal and elsewhere. He pledged continued support from NAST and reaffirmed NAST's role as country co-ordinator.

2. COMPOSITION OF THE EDITORIAL BOARD

- There was a discussion about the future **role of Keshab Rajbhandari** and whether he should continue to serve on the Editorial Board following his recent retirement. DB noted that Hari Krishna Saiju (DPR Director General) virtually agreed that KR should continue in his current role for at least the publication of the first two volumes.
- DB suggested that an **Advisory Board**, distinct from the Editorial Board, should accommodate all the relevant institutions. TS suggested that a small **Management Committee** could include institutional representatives. MW suggested that the wording of the MoU concerning institutional participation in the Board should be checked to see if this can be accommodated with the current MoU.
- MW proposed that **Colin Pendry** (Assistant Editor at RBGE) should be included in list of editors. It was agreed that his name would appear after SA in the alphabetic listing of co-editors after the editor-in-chief.
- SB noted that it is currently not appropriate for the **Natural History Museum**, London (BM) to have a representative on the Editorial Board but this may change in the future.

3. GUIDELINES FOR CONTRIBUTORS

- **External distributions.** HO commented that the Tibet Plateau extends into SW China and that it would be good to have a separate Sino-himalayan region. It was decided to replace the term 'Deccan' with 'South Asian'.
- It was decided to include **maps of administrative divisions of Nepal** and the **regions outside Nepal** in both the guidelines and within the front and back covers of published volumes of the floras.
- Japanese Journal of Botany and Edinburgh Journal of Botany should be the recommended place of publication of all **taxonomic papers relating to the Flora**.
- **Drawings and digital photographs** should be collected during the preparation of accounts and made available on publication of the volume. This requirement needs to be added to the Guidelines.
- Two variants of the **draft Polygalaceae account** were circulated and it was agreed that the style of writing which includes shorter and more numerous sentences is preferable, particularly for those who use English as a second language. A revised account will be included with the Guidelines.
- **Minor errors** were highlighted and changes made to the Guidelines. HO and AS will re-annotate a revised copy of the Guidelines with the corrections lost on the Vienna manuscript.

4. PROCEDURE FOR PROCESSION OF MANUSCRIPTS

- The need for a **clear system for monitoring the progress of manuscripts** from commission to final delivery was discussed. RBGE will maintain the master list of manuscripts and major stages must be recorded with RBGE to ensure that there will be no duplication of effort. It was decided to develop a list of criteria for the stages of the publication process. The initial list was outlined during the meeting and finalised by email in the days following the meeting (see attachment). This will be included in the Guidelines to the contributors.

- In the future it will be possible to develop a web-based system for **making early manuscripts available**, but in the short term we should concentrate on getting manuscripts to the publication stage. Priority must be to get the first volume in print.
- While it is preferable to have a **Nepalese co-author** this is not necessary if the account is very complete.
- If the author of a published **DPR Fascicle of the Flora of Nepal** is currently active they should be co-opted as co-author.

5. Review of progress on manuscripts for Volume 3

- The '**Author Allocation**' spreadsheet was discussed and all families either assigned to authors or suggestions made for contacting experts. The updated spreadsheet is attached.
- MW is to approach Paul Kessler concerning the Anacardiaceae, Magnus Liden for *Corydalis* and Chris Grey Wilson for *Meconopsis*.
- All of the **Darwin Scholars should be allocated accounts** (as co-authors) in Volume 3 so that their training is utilised as soon as possible.
- KS agreed to see that **TU-CDB MSc Plant Taxonomy students'** dissertations integrate into the FoN process and where possible they become co-authors.
- **Manuscript deadlines** were set with the proposal that all manuscripts will be in place by August 2007

6. Potential Publishers for the Flora

- **Potential publishers** in Nepal / India (e.g. Bishen Singh Mahendra Pal Singh), Japan (e.g. Kodansha) and the UK (e.g. Cambridge University Press) will be approached by KKS, HO and SB respectively
- It was agreed that a publisher needs to have a **good distribution network**, and that may not be possible if it is published within Nepal.
- A **pricing policy for Nepal** is vital or the Flora will be prohibitively expensive for Nepalis. Therefore a low price edition should be arranged for Nepali markets.
- **Simultaneous web publication** with free downloads is planned and this must be cleared with the publisher.

7. Any Other Business

- We may need to have an **additional MoU with NAST** to clarify differences between their role (coordination with Government of Nepal institutions) from that of the new **Flora of Nepal Office** (physical location of shared equipment, facilities).
- A **report of this meeting**, the Darwin Project and the recent fieldwork should be published in the Newsletter of Himalayan Botany (MW to draft articles).
- **Local media** should be encouraged to report on these activities.
- **Introductory Volume**. MW reported that Georg Miehe (Marburg, Germany) is interested in taking a lead with several chapters in the Introductory Volume. Although this has not been discussed formally, it was agreed to circulate some draft chapter headings (see attachment) for email discussion.

FLORA OF NEPAL MANUSCRIPT PROGRESSION

Stage	Summary	Landmarks
0	<i>not worked on</i>	Volume assigned with indicative timescale
I	<i>editorial process started</i>	Editor assigned Potential authors listed
II	<i>manuscript delivery established</i>	Lead Author contracted with deadline Co-authors contacted
III	<i>first draft</i>	Lead Author delivers an acceptable first draft checked by Editor
IV	<i>revised draft</i>	Revised draft produced by Co-authors and Lead Author, checked by Editor
V	<i>ready for publication</i>	Comments from Reviewers incorporated Local names and uses added Final formatting by Administrative Centre Ready for publication

Roles

FoN Administrative Centre - RBGE staff responsible for:

- assignment of *Editors* and provision of suggested author lists
- liaison with *Editors* on the progress of manuscripts through to Stage IV
- recording manuscript tracking and filing important correspondence
- posting of manuscripts on the project ftp site
- liaison with *Reviewers* and incorporation of feedback in to manuscript
- incorporation of Local Names and uses into manuscript
- final editorial check and production of Stage V manuscript to agreed deadline

Editor - responsible for all aspects of progressing manuscripts through to Stage IV, including:

- contacting and signing-up of *Lead Authors* and *Co-authors*
- provision of Flora of Nepal Guidelines to authors
- supporting authors with advice and help in obtaining requested literature
- deadline enforcement with authors
- checking and editing of manuscripts and supporting data to confirm to Guidelines
- liaison with the *Administrative Centre* on manuscript progress
- copying of important correspondence to the *Administrative Centre*
- sending manuscripts to *Administrative Centre* for posting on the project download website

Lead Author - may be Nepalese or non-Nepalese, responsible for:

- producing the Stage III (first draft) manuscript and supporting data in the format stipulated in the Flora of Nepal Guidelines to the agreed deadline
- collaborating with *Editor* and *Co-author(s)* on revising manuscript to the agreed deadline

Co-author(s) - responsible for:

- collaborating with *Lead Author* and *Editor* to revise Stage III manuscripts
- production of the Stage IV manuscript to an agreed deadline

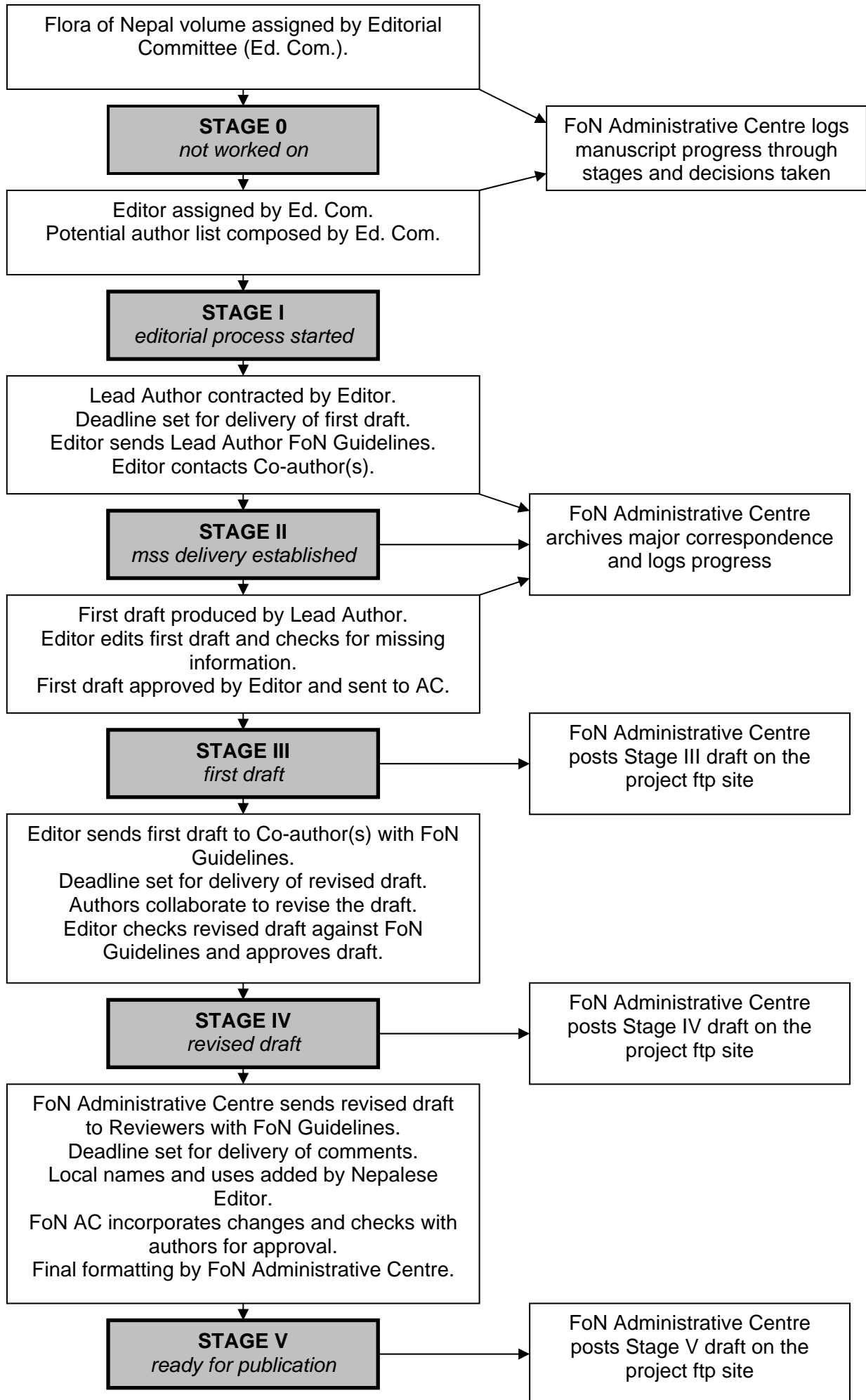
Reviewers - specialists on the floras of surrounding regions or the taxonomic group, responsible for:

- commenting on Stage IV manuscripts to an agreed deadline.

Nepalese Editor - designated member of the Nepal Chapter, responsible for:

- providing local vernacular names in Devanagari and in roman transliteration
- providing data for local uses, all to agreed deadline

Flora of Nepal Manuscript Progression Flow Chart



Manuscript Author Allocations Volume 3

Families & major genera	Genera per family	Species per family	Species per genus	Editorial Centre	Author	Draft account	Fascicle Volume	Fascicle Author	Flora of Bhutan author	Minirevision author
Magnoliaceae	4	13		Nepal KKS	RC Poudel & Yumiko Baba RBGE (KRR advisor)	Dec-06	2(17)	Rajbhandari	Grierson	
<i>Magnolia</i>			6		RC Poudel & Yumiko Baba, RBGE (KRR advisor)					
<i>Mangelietia</i>			1		RC Poudel & Yumiko Baba RBGE (KRR advisor)					
<i>Michelia</i>			5		RC Poudel & Yumiko Baba RBGE (KRR advisor)					
<i>Talauma</i>			1		RC Poudel & Yumiko Baba RBGE (KRR advisor)					
Schisandraceae	1	3		Nepal KKS	KRR & Chantel Davis RBGE				Grierson & Long	
<i>Schisandra</i>			3		KRR & Chantel Davis RBGE					
Tetracentraceae	1	1		Nepal KKS	CP with Darwin Scholar					
<i>Tetracentron</i>			1		CP with Darwin Scholar					
Annonaceae	5	9		RBGE	Paul Kessler? KKS as second author		2(20)	P.P.Kurmi	Grierson	
<i>Annona</i>			2		Paul Kessler? KKS as second author					
<i>Desmos</i>			1		Paul Kessler? KKS as second author					
<i>Melodorum</i>			1		Paul Kessler? KKS as second author					
<i>Miliusa</i>			4		Paul Kessler? KKS as second author					

<i>Uvaria</i>			1		Paul Kessler? KKS as second author				
Myristicaceae	2	2		Nepal	MW with Darwin Scholar				
<i>Horsfieldia</i>			1		MW with Darwin Scholar				
<i>Knema</i>			1		MW with Darwin Scholar				
Lauraceae	12	56		RBGE	CP	Mar-07			Long
<i>Actinodaphne</i>			5						
<i>Beilschmiedia</i>			2						
<i>Cinnadenia</i>			1						
<i>Cinnamomum</i>			7						
<i>Cryptocarya</i>			1						
<i>Dodecadenia</i>			2						
<i>Lindera</i>			8						
<i>Litsea</i>			13						
<i>Neocinnamomum</i>			1						
<i>Neolitsea</i>			2						
<i>Persea</i>			10						
<i>Phoebe</i>			4						
Papaveraceae	8	71		RBGE					Long
<i>Argemone</i>			2		MW with Darwin Scholar				
<i>Corydalis</i>			43		Magnus Liden? (not asked yet)				
<i>Dicentra</i>			3			y			Stephanie Peigney 2004, Mark Binder 2005
<i>Dicranostigma</i>			1		MW with Darwin Scholar				
<i>Fumaria</i>			3		MW with Darwin Scholar				
<i>Hypecoum</i>			2		MW with Darwin Scholar				
<i>Meconopsis</i>			14		Sangita Shrestha DS & Chris Grey-Wilson, KRR	y			
<i>Papaver</i>			3						

Capparaceae	4	11		RBGE	KKS + Sajan Dahal		2(24)	S.Dahal	Grierson	
<i>Capparis</i>			4							
<i>Cleome</i>			5							
<i>Crateva</i>			1							
<i>Stixis</i>			1							
Cruciferae	38	101	101	RBGE	Al-Shehbaz has submitted the manuscript	y			Grierson	
Moringaceae	1	1		RBGE	Blackmore				Grierson & Long	
<i>Moringa</i>			1							
Droseraceae	1	2		RBGE	Darwin Scholar & MW				Long	
<i>Drosera</i>			2							
Crassulaceae	7	47		RBGE	HO to send manuscript to MW	Nov-06			Grierson	
<i>Bryophyllum</i>			1							
<i>Kalanchoe</i>			1							
<i>Rhodiola</i>			23							
<i>Rosularia</i>			3							
<i>Sedum</i>			16							
<i>Sinocrassula</i>			1							
<i>Tillaea</i>			1							
Saxifragaceae	6	98		RBGE	SA to coordinate with Richard Gornell	Mar-97			Grierson	
<i>Astilbe</i>			1		SA					
<i>Bergenia</i>			2		SA					
<i>Chrysosplenium</i>			9	RBGE	Bhaskar Adhikari manuscript sent to SA	y				
<i>Rodgersia</i>			1		SA & MW					
<i>Saxifraga</i>			85	RBGE	SA & Richard Gornell	Dec-06				
<i>Tiarella</i>			1		SA					
Parnassiaceae	1	6		Japan	Bhaskar Adhikari manuscript sent to SA				Grierson	
<i>Parnassia</i>			9		Bhaskar Adhikari manuscript sent to SA	y				
Hydrangeaceae	4	10		Japan	Sirjana Shrestha manuscript to be sent to HO & KRR				Grierson	

<i>Deutzia</i>			3		Sirjana Shrestha manuscript to be sent to HO & KRR					
<i>Dichroa</i>			1		Sirjana Shrestha manuscript to be sent to HO & KRR					
<i>Hydrangea</i>			5		Sirjana Shrestha manuscript to be sent to HO & KRR					
<i>Philadelphus</i>			1		Sirjana Shrestha manuscript to be sent to HO & KRR					
Grossulariaceae	1	9		RBGE	Crinan Alexander				Grierson	
<i>Ribes</i>			9		Crinan Alexander					
Pittosporaceae	1	1		RBGE	M.Pullan and Darwin Scholar				Long	
<i>Pittosporum</i>			1		M.Pullan and Darwin Scholar					
Hamamelidaceae	1	1		RBGE	MW with Darwin Scholar				Long	
<i>Exbucklandia</i>			1		MW with Darwin Scholar					
Rosaceae	29	192		Japan					Grierson & Long	
<i>Cotoneaster</i>			39	Japan	Brach	y				
<i>Potentilla</i>			51	Japan	Ikeda (Sojak reviewer?)	Mar-07				
<i>Prunus</i>			16	Japan	Ohba					
<i>Rosa</i>			10	Japan	Ohba	Mar-07				
<i>Rubus</i>			33	Japan	Boufford - to be confirmed					
<i>Sibbaldia</i>			8	Japan	Ikeda					
<i>Sorbus</i>			13	Japan	MW with Darwin Scholar					
<i>Spiraea</i>			10	Japan	Crinan Alexander + MW with Darwin Scholar					
		634	625							

Introduction volume (draft contents by George Miehe)

- 1. Regional setting: Nepal in the Himalayas**
- 2. Landscapes of Nepal and selected ecological transects** (Kali Gandaki, Langtang, Sagarmatha)
- 3. Geology and Uplift of the Himalayas**
- 4. Climate and Weather**
 - 4.1 Temperatures
 - 4.2 Precipitation
 - 4.3 Winds
 - 4.4 Climatic diagrams (145 diagrams plus their location in a map)
 - 4.5 The weather in the Langtang/Helambu during the year
 - 4.6 Altitudinal changes of humidity as told by epiphytes
- 5. Rivers, Lakes and Glaciers**
- 6. Landforms, Processes and Soils**
- 7. Fauna Overview**
- 8. Flora (including remarks on bryophytes and lichens)**
 - 8.1 Overview including bryophytes and lichens
 - 8.2 Floristic Units
 - 8.3 Plant distribution patterns (related to climatic changes with several distribution maps)
- 9. People and Human Impact**
 - 9.1 Traditional land use systems, modern changes, especially forest, cover changes, impact of grazing, “tragedy of the commons” reforestation
 - 9.2 Environmental History (since when humans have impact on the flora and the ecology), including pollen diagrams (Muktinath, Lake Rukche, Langtang) with reconstruction of the human environment
 - 9.3 Fire ecology
- 10. Vegetation Ecology** (Summary of short descriptions of the important forests and pasture types, including remarks on the status (natural/human replacement), with climatic diagrams of the vegetation units, and if possible with photos, to give an impression how the different vegetation types look like))
 - 10.1 Principles of classification
 - 10.2 Southern declivity
 - 10.2.1 Tropical belt ((General remarks followed by short descriptions of the important vegetation types of this altitudinal belt; each vegetation type with the photo if available and climatic diagrams))
 - 10.2.2 Subtropical Belt
 - 10.2.3 Cloud Forest Belt
 - 10.2.4 Alpine Belt
 - 10.3 Inner Valleys
 - 10.3.1 Conifer Forests
 - 10.3.2 Alpine Belt
 - 10.4 Arid Zone
 - 10.4.1 Forest relics and open dwarf shrub lands
 - 10.4.2 Alpine Belt
- 11. Nature Conservation**